



# 4th Grade Family Newsletter

**Mission:** Elk Meadows Falcons are growing to be resilient, lifelong learners.

**Golden Gate:** I will be a true friend.

**Date:** November 7, 2022

## Grade-Level Events

- Our first field trip of the year is coming up! We will be visiting Abravanel Hall to enjoy a concert by the Utah Symphony on Monday, November 14, 2022. Please remember to bring a lunch if you signed up for home lunch.

## Math

**Focus:** I can multiply two two-digit factors together using the shortcut method (standard algorithm).

$$\begin{array}{r} 2 \\ 2 \\ 67 \\ \times 43 \\ \hline 201 \\ + 2,680 \\ \hline 2,881 \end{array}$$

**Example:** In the example to the left, we multiply  $67 \times 43$  using the "shortcut method," also known as the standard algorithm for multiplication. Two partial products are added together to find the final product, 2,881. Ask your child about the "turtle" method for remembering these steps.

## Language Arts

**Focus:** I can determine the meaning of a word or phrase using context clues.

**Example:**

What does the word *reinforce* mean in the sentence below?

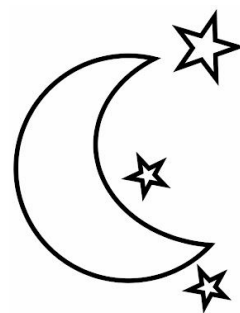
**The teacher had the children complete an activity to reinforce what they had just learned.**

- A. extend
- B. lengthen
- C. strengthen
- D. weaken



## Science

**Earth & Sun Focus:** I can observe the moon over a period of time and identify patterns.



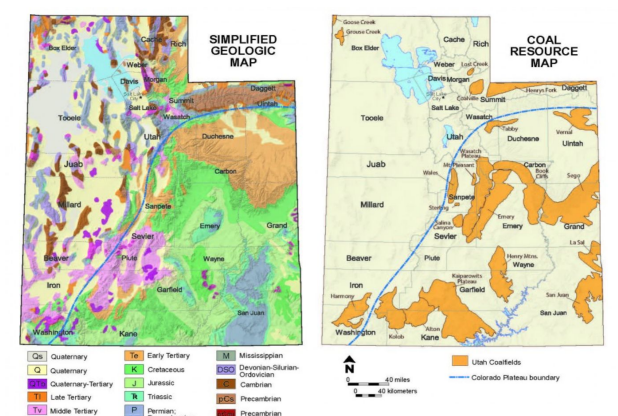
**Example:** Go out at night, and look for the Moon. Record your observations. Can you see the Moon at night? Where is it in the sky? What does it look like? In your observations, draw what the Moon looks like each night. Do this at the same time every night for the next two weeks. Look for patterns in your observations. Describe the pattern to your family. Can you predict what the Moon will look like tomorrow night? Next week? Next month?

## Social Studies

**Focus:** I can classify the distribution and use of natural resources in Utah.

**Example:**

Why are natural resources, such as coal, found in some places but not in others?



Using the map, observe how coal is more abundant in certain areas of Utah and not others based on geological processes and timing of events that have occurred in different parts of Utah.

## Family Connection/Additional Information

- ★ Wear your falcon shirt on Fridays to show school spirit and to get a falcon ticket!
- ★ Parents & Pastries will be held Tuesday, Nov. 8 @ 7:45-8:45 AM
- ★ BOOK FAIR open all week during lunch and after school!