



5th Grade Family Newsletter

Mission: Elk Meadows Falcons are growing to be resilient, lifelong learners.

Social Skill: I can show grit.

Date: November 5, 2023

Grade-Level Events

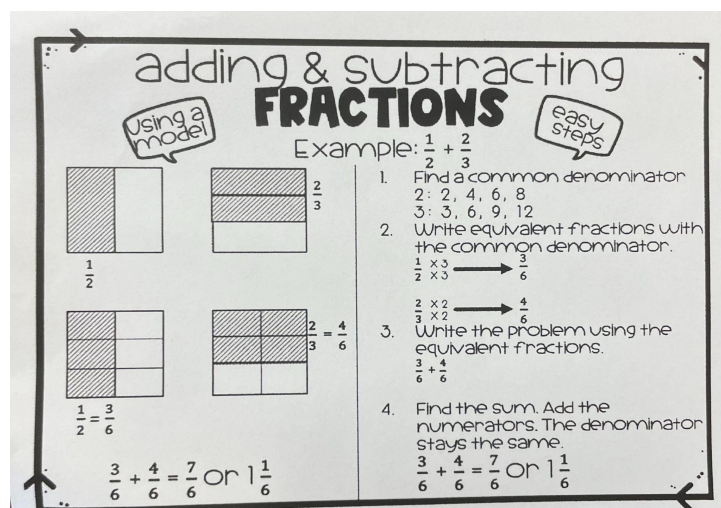
- DARE Graduation Friday, November 17 at 10:00 in the gym. Parents are invited.
- Tuesday, Nov. 21st is an early out day. Thanksgiving Break is November 22-26.
- 5th grade Colonial Days is Nov. 30 and Dec. 1. We need lots of parent volunteers to help this be successful. Please watch for sign ups to come home.
- See the requirements for the OPTIONAL Great American challenge on the back. We will be working on most of these during class. Remember, this is OPTIONAL. This is for those students that are looking for a challenge.

Math

Focus: I can add and subtract fractions with unlike denominators using Least Common Multiple and Greatest Common Factor.

Please check with your child to see how they are feeling about fractions. They may need extra support at home.

Here is a simple video you could review with them.



<https://www.youtube.com/watch?v=RIhwfqULbAE>

Examples:

Least Common Multiple (LCM): The LCM is: 12

3's: 3, 6, 9, 12, 15,

4's: 4, 8, 12, 16

Greatest Common Factor (GCF) The GCF is: 3

15: 1, 15, 3, 5

9: 1, 9, 3, 3

Science

In science we teach the following units.

- Rocks, soils, and landforms
- Mixtures and solutions
- Living systems

Did You Know?

All organisms have needs, such as food, water, and air. If the needs of the organisms in the ecosystem are not met, they cannot survive.

Language Arts

Focus: I can accurately quote from a fiction text when I am explaining what it says and support **inferences** that I have made.

Example: Finding an inference is similar to being a detective. Readers will look for clues in what the characters say or do. It is important to take the clues from the text and use our background knowledge to figure out what is being implied.

Ms. Giffen left her house in rubber boots and brought an umbrella. What can you infer about the weather?

Social Studies

Focus: I can describe and explain the settling, growth and development of the American colonies.

Example: Compare the geographic and cultural differences between the New England, Middle, and Southern colonies (e.g., religious, economic, political).

Example: Analyze contributions of American Indian people to the colonial settlements.

Family Connection/Additional Information

- Wear your Falcon shirt on Fridays to show your school spirit.
- Remember, the yearbook cover contest is due this Thursday, November 9!!
- Please join your individual class's communication app (Remind or Bloomz).
- Thank you to all of our parent helpers who made Halloween such a fun day!!